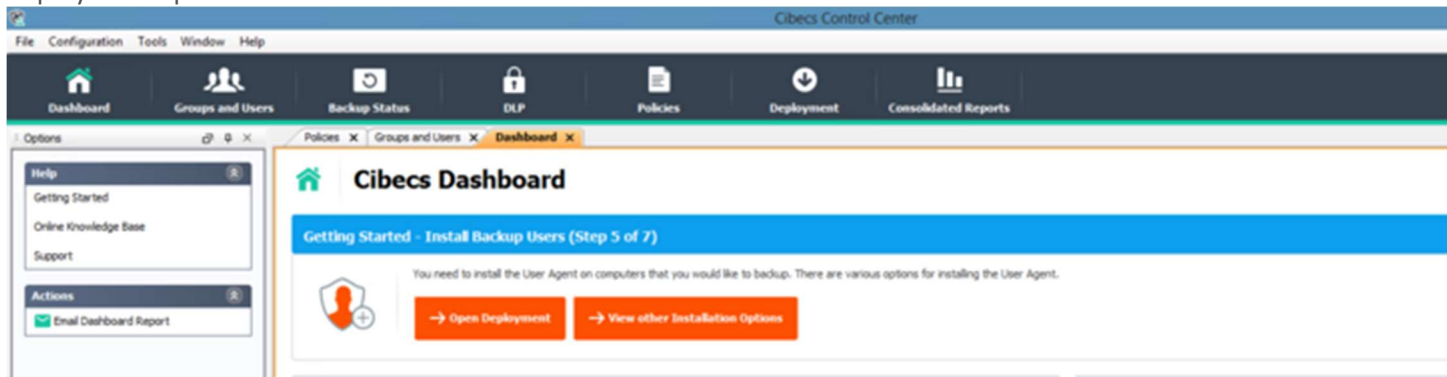


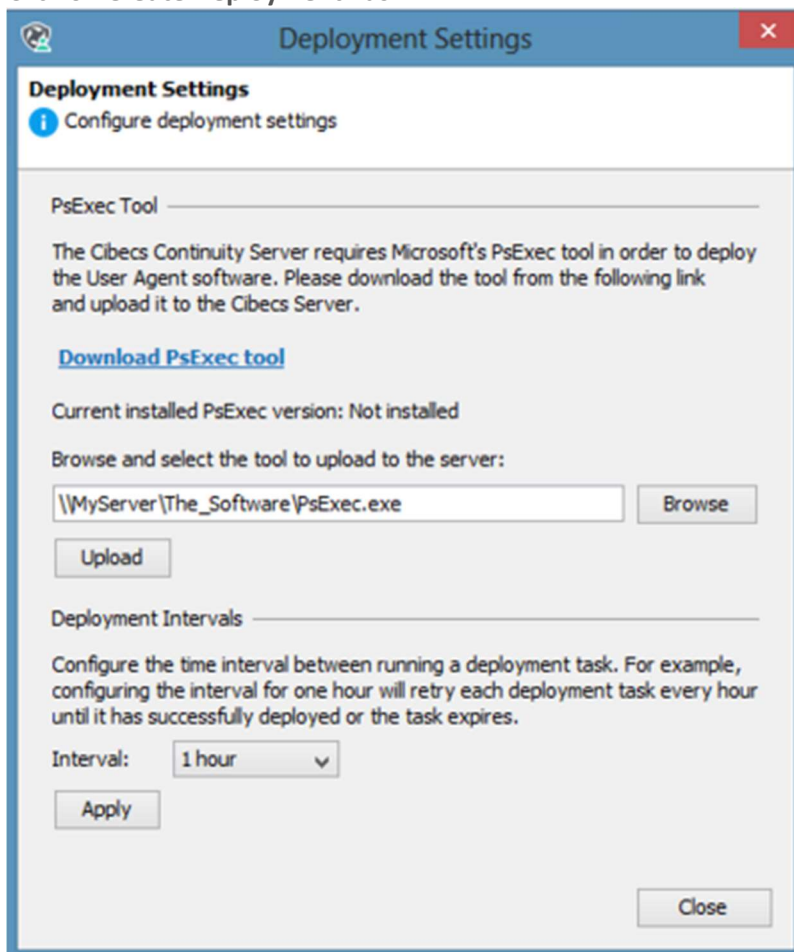
Deployment task

The User Agent software is responsible for managing and processing the backups for each end-user. To begin the protection of your user data, you need to deploy the User Agent to the client computers.

1. Select the **Open Deployment** button in the Getting Started wizard to start your deployment using Cibecs built-in deployment. Click on **View other Installation Options** if you would like to see alternative deployment options.



2. Click on **Create Deployment Task**



1. Download the PSEXec tool from the link and copy it to the server.
2. Browse for the PSEXec file located on the server.
3. Upload the PSEXec file and close the window

3. Select to specify an IP address range. There is also an option to upload a CSV file with a list of hostnames.
4. Enter an IP address range to deploy the User Agent to.

The screenshot shows a Windows-style dialog box titled "New Deployment Task Wizard" with a red close button in the top right corner. The main title bar is blue. Inside the dialog, the title "New Deployment Task Wizard" is followed by a blue information icon and the text "IP address ranges". Below this, the instruction "Specify IP address ranges to target for deployment." is displayed. The "Ip address range:" section contains two text boxes: "Start:" with the value "192.168.1.11" and "End:" with the value "192.168.1.200", followed by an "Add" button. The "Ip address ranges to target:" section shows a list box containing the range "192.168.1.1 - 192.168.1.200" and a "Remove" button. At the bottom left, there is a checkbox labeled "Exclude Microsoft Windows Server Operating Systems". At the bottom right, there are four buttons: "< Back", "Next >" (highlighted with a blue border), "Finish", and "Cancel".

5. Enter the network administrator credentials for deployment to client computers. Format = Domain\Username

New Deployment Task Wizard

New Deployment Task Wizard
Administrator credentials

Enter the administrator credentials for the computers specified for deployment.

Administrator share credentials:

Username: cibecs\administrator

Password: ●●●●●●●●

☒ Save Password

< Back Next > Finish Cancel

6. Browse for the **agent.msi** file which is also called the User Agent installation package.

New Deployment Task Wizard

New Deployment Task Wizard
Deployment options

Specify a User Agent package to deploy.

☒ Package: agent-8.0.5.39 (agent-8.0.5.39.msi)

☐ UNC Path:

Installation type: Repair current installation or change configuration

Package configuration

Backup server hostname: Student01

Backup server ports: Server: 8443 Updates: 8080

Force update of hostname and ports: ☒

Suppress Agent desktop icon: ☐

Silent setup: ☒

[Configure Agent Uninstall Password](#)

i You can prohibit users from uninstalling the User Agent by configuring an uninstallation password.

< Back Next > Finish Cancel

7. Specify a name for the deployment task and click **Finish**.
8. You will see the deployment success rate on the **Deployment screen**.